

# DCM-PRO System

## DETALJI

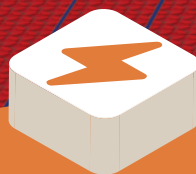
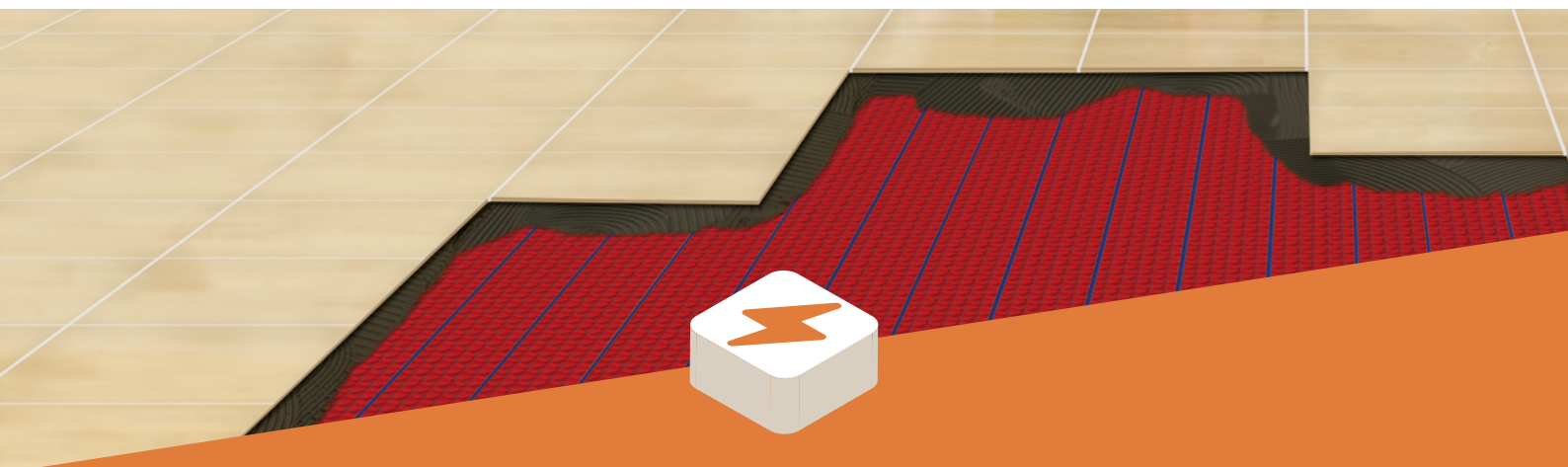
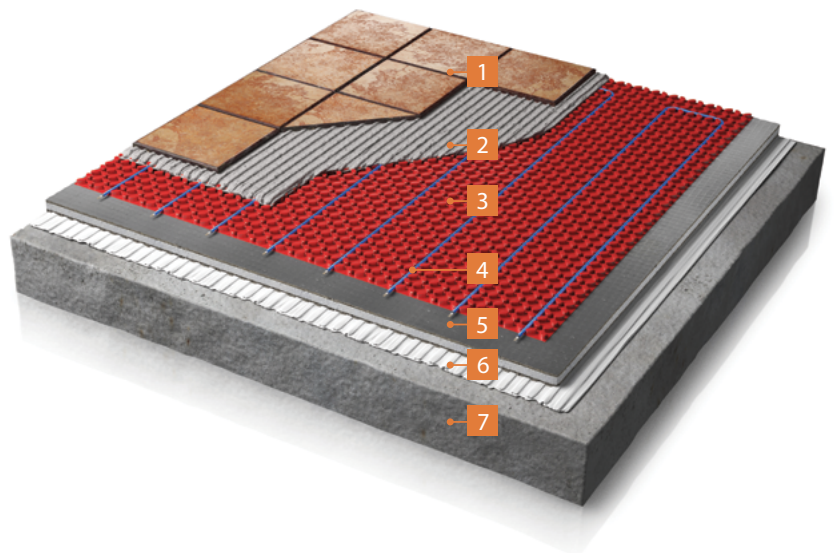
The Warmup DCM-PRO System is designed for use over a subfloor prepared for tiling. The mat has a strong self-adhesive layer to secure it directly to Warmup insulation boards. Alternatively it can be affixed to a clean dry subfloor, which has been primed using an SBR primer (ratio 1:4). The mat is available in 1m<sup>2</sup> sheets or 15m x 1m rolls, which makes installation quick and easy whilst ensuring precision is maintained. The mat can be easily trimmed using a utility knife.

The 4,5mm multi-strand, dual core heating cable, is insulated with an advanced fluoropolymer making it exceptionally tough and easy to tile over. It is easily clipped into the DCM-PRO mat by gently pressing it in between the castellations. The cable can be spaced at 60mm, 90mm & 120mm depending on power requirements.

The DCM-PRO system can be used as a waterproofing layer through the addition of the DCM-PRO Waterproofing tape, for installations such as wetrooms or where there will be significant exposure to water.

### KONSTRUKCIJA PODA

1. Završni pod
2. Fleksibilno ljepilo
3. DCM-PRO Mat
4. DCM-PRO Cable
5. Toplotna izolacija
6. Fleksibilno ljepilo
7. Podloga



095 504 0560

hr@warmup.com  
www.warmup.com.hr

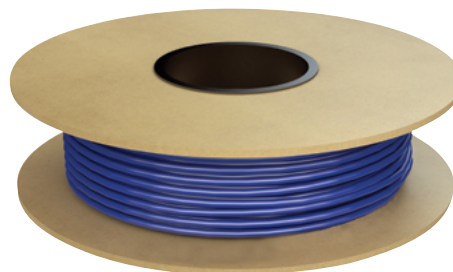
**Warmup**

The world's best-selling floor heating brand™

# Tehničke karakteristike

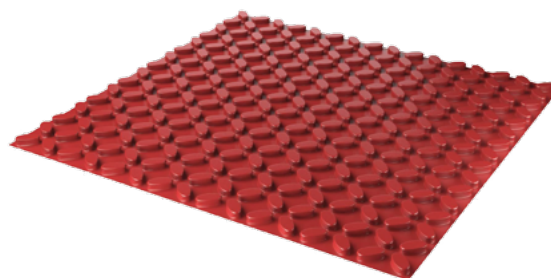
## TEHNIČKE KARAKTERISTIKE - DCM-PRO Cable

RADNI NAPON	220 - 240v: 50Hz
IP STANDARD	IPX7
COLOUR	BLUE
DEBLJINA	4.5mm (± 0.2mm)
SNAGA	150w/m <sup>2</sup> (3 Castellations - 90mm)
UNUTRAŠNJA IZOLACIJA	ADVANCED FLUOROPOLYMER (ETFE)
SPOLJNA IZOLACIJA	PVC
DUŽINA HLADNOG KRAJA	3m



## TEHNIČKE KARAKTERISTIKE - DCM-PRO Mat

DEBLJINA	5.5mm
COMPOSITION	POLYPROPYLENE MEMBRANE WITH SELF-ADHESIVE BACKING
COLOUR	RED
SPACING	60mm, 90mm & 120mm
SIZING	1m <sup>2</sup> sheet / 15m x 1m roll



## Osobine i prednosti

- 4,5mm cable multi-strand, dual core heating cable with an advanced fluoropolymer inner insulation making it exceptionally tough and easy to tile over
- Reduced installation costs, by comparison to similar products
- Pressure sensitive adhesive securely binds the mats to the floor keeping them flat for fast and secure installation
- BEAB i CE izjava o sukladnosti
- Doživotna Garancija i SafetyNet™ Jamstvo pri Instaliranju

**SAFETY Net™**  
Garanție de instalare



# Dimenzije

MODEL	DCM-PRO MAT SIZES			
	FORMAT	DUŽINA (mm)	ŠIRINA (mm)	AREA COVERED (m <sup>2</sup> )
DCM-M-1	Sheet	1,040	980	1
DCM-M-15	Roll	15,300	980	15

MODEL	DCM-PRO CABLE			
	SNAGA (W)	AMP. (A)	OTPOR (Ω)	RESISTANCE BANDS (Ω)
DCM-C-1	150	0,6	352,7	335,0 - 370,3
DCM-C-1.5	225	0,9	235,1	223,3 - 246,9
DCM-C-2	300	1,3	176,3	167,5 - 185,1
DCM-C-2.5	375	1,6	141,1	134,1 - 148,2
DCM-C-3	450	1,9	117,6	111,7 - 123,5
DCM-C-3.5	525	2,2	100,8	95,8 - 105,8
DCM-C-4	600	2,5	88,2	83,8 - 92,6
DCM-C-4.5	675	2,8	78,4	74,5 - 82,3
DCM-C-5	750	3,2	70,5	67,0 - 74,0
DCM-C-6	900	3,8	58,8	55,9 - 61,7
DCM-C-7	1050	4,4	50,4	48,0 - 52,9
DCM-C-8	1200	5,0	44,1	42,0 - 46,3
DCM-C-9	1350	5,7	39,2	37,2 - 41,2
DCM-C-10	1500	6,3	35,3	33,5 - 37,1
DCM-C-12	1800	7,6	29,4	27,9 - 30,9
DCM-C-14	2100	8,8	25,2	23,9 - 26,5
DCM-C-16	2400	10,1	22,0	20,9 - 23,1

CABLE LENGTH (m)	HEATED AREA AT DIFFERENT SPACINGS, m <sup>2</sup>				
	60mm	60/90mm	90mm	90/120mm	120mm
	230W/m <sup>2</sup>	~190W/m <sup>2</sup>	150W/m <sup>2</sup>	~130W/m <sup>2</sup>	115W/m <sup>2</sup>
11,1	0,7	0,8	1,0	1,2	1,3
16,6	1,0	1,3	1,5	1,8	2,0
22,2	1,3	1,7	2,0	2,3	2,7
27,7	1,7	2,1	2,5	2,9	3,3
33,3	2,0	2,5	3,0	3,5	4,0
38,8	2,3	2,9	3,5	4,1	4,7
44,4	2,7	3,3	4,0	4,7	5,3
50,0	3,0	3,8	4,5	5,3	6,0
55,5	3,3	4,2	5,0	5,8	6,7
66,6	4,0	5,0	6,0	7,0	8,0
77,7	4,7	5,8	7,0	8,2	9,3
88,8	5,3	6,7	8,0	9,3	10,7
100,0	6,0	7,5	9,0	10,5	12,0
111,1	6,7	8,3	10,0	11,7	13,3
133,3	8,0	10,0	12,0	14,0	16,0
155,5	9,3	11,7	14,0	16,3	18,7
177,1	10,7	13,3	16,0	18,7	21,3

**Note:** To heat larger areas, two or more cables should be used. i.e. To heat a 23m<sup>2</sup> room at 150W/m<sup>2</sup>, use a DCM-C-14 and a DCM-C-9

MODEL	DCM-PRO ADDITIONAL COMPONENTS
	PRODUCT DESCRIPTION
DCM-E-25	PERIMETER STRIP
DCM-T-50	WATERPROOFING TAPE
DCM-R-I	INTERNAL CORNER
DCM-R-E	EXTERNAL CORNER

FORMAT	DUŽINA (Varies)	ŠIRINA (mm)	HEIGHT (mm)	DEBLJINA (mm)
Roll	25m	-	30	10
Roll	50m	-	120	1
Corner	120mm	120	60	1
Corner	120mm	120	60	1

# WARMUP DODATNI PROIZVODI

## Izolacijske Ploče

Obložene izolacijske ploče su sa obje strane prekrivene fiberglas mrežom koja je utopljena u tanki sloj cementnebuke polimera. Izolacijske ploče su napravljene da podnesu teret od 30 tona po kvadratnom metru i idealne su za upotrebu sa električnim podnim grijanjem jer sprječavaju da toplota prodire u podlogu ispod.

### TEHNIČKE KARAKTERISTIKE

MODEL	DEBLJINA (mm)	ŠIRINA (mm)	DUŽINA (mm)	TEŽINA (kg)	TOPLINSKI OTPOR (m <sup>2</sup> .K/W)
INSBOARD6MM	6	600	1250	1,95	0,16
INSBOARD(PK1)	10	600	1250	2,22	0,28
INSBOARD20MM	20	600	1250	2,48	0,58
INSBOARD50MM	50	600	1250	3,26	1,50



**Warmup Izolacijske ploče imaju 0 Potencijal trošenja ozona i Potencijal globalnog zagrijavanja niži od 5**

## Termostati



### 4iE<sup>®</sup> SMART WIFI THERMOSTAT

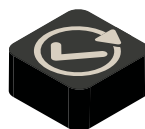
Za centralna grijanja i sustave podnog grijanja

WiFi konektovan na internet, može se kontrolisati sa smartfona, tableta ili računala, kao i sa njegovog touchscreen pristupa. Uči kako korisnici upotrebljavaju grijanje i jedinstven način reagovanja svake zone pojedinačno. Upotrebljava saznanja da sugeriše načine za uštedu energije, kao što je koja temperatura treba biti podešena kad se ne boravi u prostoru i kad se grijanje može ranije isključiti bez utjecaja na komfort.



#### SmartGeo<sup>™</sup>

Uvijek automatski na pravu temperaturu, i do 25% manje upotrebe energije. Baš kao magija.



#### Lak za upotrebu

Jednostavno i sigurno podešavanje upotrebom WiFi, uz kontrolu preko smartfona, tableta ili računala.



3iE<sup>™</sup> Programabilni Termostat



Tempo<sup>™</sup> Programabilni Termostat